

**5069 Compact I/O Capacity**

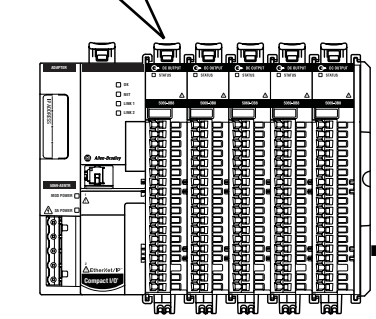
- Supports 1-Gb embedded switch technology for Device Level Ring, Linear and Star topologies
- 31 I/O Modules in a single rack

**5069 Compact I/O Configuration**

- Read error and status without connecting to Adapter
- Integrated USB for PnP connection to ease configuration
- Supports 1-Gb embedded switch technology for Device Level Ring, Linear and Star topologies

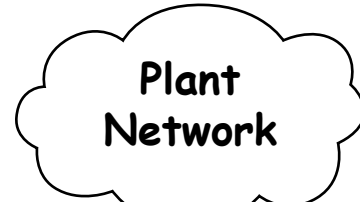
**5069 Compact I/O Performance**

- High speed backplane of packet transfer rate of 4.4ms (511 byte packet)

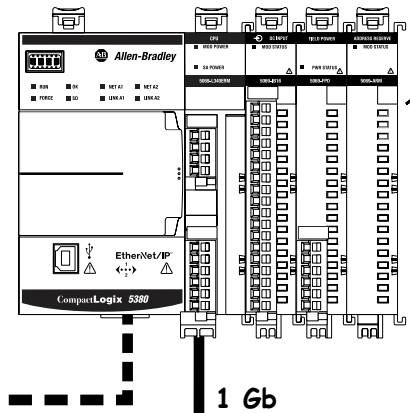


**Stratix Switch Family**

- Scale your switch selection to your application with these Rockwell Automation switches with 1 Gb port capability:
  - Stratix 8300, 8000, 5700 and 5400 switches
- When connecting machines to a high level plant network, consider IT networking best practices.



1 Gb



**CompactLogix 5380 Capacity**

- Offers Integrated Motion on EtherNet/IP up to 32 axes
- Supports upto 80 EtherNet/IP nodes
- 5 - 10x performance improvement, 32 axes/ms leads to increased throughput
- Supports upto 31 I/O Expansion modules

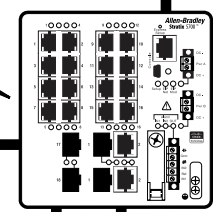
**CompactLogix 5380 Configuration**

- Common development environment for all control disciplines across the entire Logix family
- 2 RJ45 ports. Dual Gb embedded Ethernet port enables high performance I/O and motion control
- Decreased scantime for runtime performance, core programming languages execute with same performance
- Dual configurable ethernet ports for multiple IP or Device Level ring topologies

**CompactLogix 5380 Performance**

- Enables high-speed I/O, motion control, and Device Level Ring/Linear Topologies
- Includes dual configurable port that supports Dual IP address
- With 5069 CompactI/O, under 1ms screw to screw performance

1 Gb

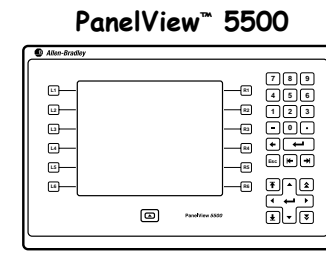


Stratix 5400

**Slim ArmorBlock SOE I/O Module Capacity**

- Sequence of Events (SOE) module
- Time stamp data can be used for motion soft registration support.
- Includes 100us transition time stamp
- Supports connection to IO-Link enabled devices with the IO-Link master module
- Supports IO-Link Master for communication with sensors and actuators

100 Mb



PanelView 5500

**Panelview 5500 Capacity**

- 512 MB RAM and 250 MB nonvolatile storage
- Includes Logix-based alarms, navigation menu and State Tables
- Multi-language support with language switching
- Achieves <100 ms response for machine jogging applications with a high-speed HMI button

**Panelview 5500 Configuration**

- Studio 5000 View Designer
- Pre-defined Logix integration content
- Real-time trending
- Two 10/100 Base-T, Auto MDI/MDI-X EtherNet ports that supports DLR, Linear or Star network topologies

**Panelview 5500 Performance**

- Offers display sizes from 7...19 in. with wide screen, touch, and keypad options
- Color TFT LCD, 18-bit Color Graphics (262, 144 Colors), LED backlight
- Analog resistive touch screen

**Kinetix 5500 Capacity**

- Single or Dual Axis Modules
- 325-528VAC
- 1.6-60kW
- Embedded 2 Port EtherNet/IP supports Linear/Ring topologies

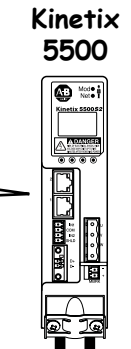
**Kinetix 5500 Configuration**

- Full integrated motion support for Kinetix 350, Kinetix 5500, Kinetix 5700, Kinetix 6500 & PowerFlex 755 using EtherNet/IP
- Studio 5000 Logix Designer common integrated motion programming, configuration, commissioning and drive diagnostic & maintenance tools.
- Network or Hardware Safety - Safe Torque Off - SIL3 PLe

**Kinetix 5500 Performance**

- High speed registration input on Kinetix drive can trigger a motion task in Studio 5000 Logix Designer for faster event task performance.

100 Mb



Kinetix 5500



PowerFlex 527

**PowerFlex 527 Capacity**

- 5 to 30 HP, 4 to 22KW
- 100 to 600V single or 3-phase
- 24vDC digital I/O
- Analog I/O
- Embedded EtherNet/IP (Linear/Ring with Dual Port Option)

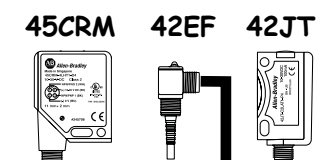
**PowerFlex 527 Configuration**

- Studio 5000 Logix Designer common integrated motion programming, configuration, commissioning and drive diagnostic & maintenance tools.
- Embedded Safe Torque Off (SIL3 PLe)

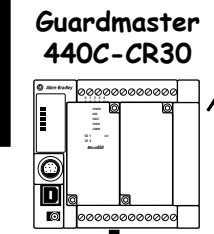
**PowerFlex 527 Performance**

- Ideal complement to machines already using Kinetix servo drives.
- Designed for the in/out feed conveyors and fan and pump applications requiring induction motor control.

Slim ArmorBlock SOE I/O Module



45CRM 42EF 42JT



Guardmaster 440C-CR30

**Guardmaster 440C-CR30 Capacity**

- PLe and SIL 3 Certified
- 22 Safety I/O- 12 Inputs, 4 Outputs, 6 multi-purpose (input, output or pulse test)
- Supports 16 expanded standard I/O via plug-in

**Guardmaster 440C-CR30 Configuration**

- Configured using Connected Components Workbench™ software
- 2080 Plug-in support for expanded I/O and communication options

**Guardmaster 440C-CR30 Performance**

- Supports Single Wire Safety for easy integration of GSR relays
- Direct PanelView™ Component Connectivity
- Direct Micro800® Controller Connectivity

Note: Performance is what we tested, not the max capacity



CompactLogix 5380 with Dual IP Configuration

# Bill of Material

Qty	Catalog #	Description
<b>System: Controller Hardware</b>		
1	5069-L340ER(M)	COMPACTLOGIX 5380 PROCESSOR 4MB MEMORY
<b>System: Communication Hardware</b>		
1	1783-HMS8T4CGN	STRATIX 5400 SWITCH 8FE, 4GE PORTS
1	1756-EN2T(R)	1 or 2-PORT CLX HI-CAP ETHERNET/IP
<b>Motion Hardware</b>		
2	2198-H0003-ERS	KINETIX 5500 2.5A (RMS)
2	VPL-A1002A-CJ12AS	KINETIX VP LOW INERTIA MOTOR, IEC 100mm FRAME SIZE, 1500 RPM RATED SPEED
Single-Cable Technology - One cable between VPL Motor and Kinetix 5500 drive yields simplification and reduces costs. One cable for feedback, motor brake, and motor power.		
1	1585J-M8CBJM-1	SHIELDED ETHERNET CABLE FOR CIP DRIVES, 1 METER
1	1585J-M8CBJM-OM3	SHIELDED ETHERNET CABLES FOR CIP DRIVES, 3 METERS
<b>Note:</b> Catalog numbers consist of characters, each of which identifies a specific version or option for that component. Reference Publication GMC-SG001-EN-E Kinetix Motion Control Selection Guide for additional information		
<b>Safety Hardware</b>		
1	440C-ENET	Guardmaster 440C-CR30

Drive Hardware		
1	25C-D2P3N104	POWERFLEX 527 DRIVE, 1 HP FRAME A
1	25C-D2P3N114	POWERFLEX 527 DRIVE WITH EMBEDDED DUAL PORT ETHERNET/IP AND INTEGRATED SAFETY, 1 HP FRAME A
<b>Note:</b> PowerFlex drives come in many variations - before ordering, you will need to identify voltage rating, horsepower, enclosure type. Please refer to the PowerFlex Selection Guide (PFLEX-SG002-EN-P) for additional details on selecting the right drive for you application.		
Distributed I/O Hardware - 5069 Compact I/O		
1	5069-AEN2TR	ETHERNET/IP ADAPTER, P/S
1	5069-IB16	16 POINT 24 VDC INPUT MODULE
1	5069-OB16	16 POINT 24 VDC OUTPUT MODULE
1	5069-IF8	8 POINT ANALOG INPUT MODULE
1	5069-OF8	8 POINT ANALOG OUTPUT MODULE
Distributed I/O Hardware - OTHER		
1	1732E-IB8M8SOER	SLIM ARMORBLOCK SOE MODULE
HMI Hardware		
1	2715-B10CA	PANELVIEW 5500, 10" COLOR KEYPAD/TOUCH, AC POWER INPUT
Recommended Software		
1	9324-RLD300yyE	STUDIO 5000 LOGIX DESIGNER STANDARD EDITION
<b>Note:</b> ControlLogix Controllers can also be programmed when using Studio 5000 Logix Designer Standard, Full, or Pro.		
		STUDIO 5000 VIEW DESIGNER

CompactLogix 5380 Overview	L30ER	L31ER	L32ER	L33ER	L34ER	L310ER-NSE	L306ERM	L310ERM	L320ERM	L330ERM	L340-ERM	L350-ERM	L380-ERM	L3100-ERM
Application Memory (MB)	0.6	1	2	3	4	1	0.6	1	2	3	4	5	8	10
I/O Modules (local)	8	8	16	31	31	8	8	8	16	31	31	31	31	31
EtherNet I/P Nodes	16	24	40	50	55	24	16	24	40	50	55	60	70	80
Motion Axis (Position)	0	0	0	0	0	0	2	4	8	16	20	24	28	32

## About this Configuration

The CompactLogix 5380 Controller is being introduced to enable faster system performance. This controller enables faster system performance and demonstrates the power and scalability of the Integrated Architecture on an EtherNet/IP based network. This controller supports high performance motion upto 20 axes motion, 32 axes/ms.

A key advantage of this architecture is the ability to use Studio 5000 Logix Designer common integrated motion programming, configuration, commissioning, and motion tools for the Kinetix 5500, PowerFlex 527 and PowerFlex 755 family of products.

# About the Products

## Logix Controllers

- A common set of controls, networks, and programming software available in multiple hardware platforms
- Multiple control disciplines in a single controller - sequential / motion / drives / process
- Multiple Program Languages available in all controllers - Ladder Diagram, Function Block, Structured Text, and Sequential Function Chart
- Tag-based architecture instead of addresses native in the controller

## 5069 Compact I/O

- A new generation of Compact I/O
- High performance control in a compact design
- Scan time improvements as much as 10x

## PanelView 5500

- Reuse tags from Logix controllers by choosing them from a list
- 4" - 15" screen sizes available
- Touchscreen, keypad or combination
- Integrated EtherNet/IP, add-on communications for many other networks
- Advanced Operator Interface features such as trending, expressions, data logging, animation.

## PowerFlex Drives

- Serves applications ranging from 0.2 kW (0.25 hp) to 6,770 kW (9,000 hp).
- Common set of networks, operator interface and programming for all PowerFlex drives
- Communication Options - Ethernet/IP, ControlNet, Devicenet, DH Plus, RIO, 3rd party networks
- Hundreds of pieces of status and diagnostic information are shared with Logix controllers directly

## Kinetix Servos

- Scalable solution for applications from 100W to 112KW
- Integrated platform to simplify machine design and commissioning
- Smart Motor Technology to provide automatic identification of correct motor-to-drive connectivity

## Stratix Switches and Network Infrastructure

- Stratix 5400, 5700, 8000 and 8300 Managed switches offer Loop Prevention, Security Services, Diagnostic Information, Segmentation Services(VLANs), Prioritization Services(QoS), and Multicast Management Services.
- Stratix 2000 Unmanaged Switches offer no layer 2 or layer 3 management functionality, but offer lower cost.
- Consider Network Address Translation (NAT), available with the 9300-ENA NAT device and the Stratix 5400/5700 with NAT option, depending on your application requirements.

## IO-Link Technology

IO-Link Technology is a worldwide open-standard protocol that integrates sensors into our Connected Enterprise by connecting the IO-Link enabled device into an IO-Link master module.

The benefits of IO-Link Technology include:

- Reduced inventory and operating costs
- Increased uptime/productivity
- Simplified design, installation, setup and maintenance
- Enhanced flexibility and scalability

## For More Information and Help

For more information contact your local distributor or Rockwell Automation sales representative.

- [www.ab.com](http://www.ab.com) ( Product Directory, Publication Library, Technical Support)